



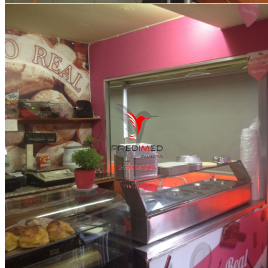
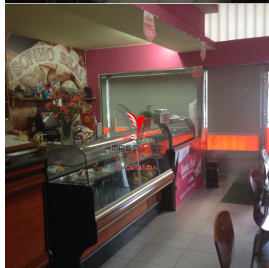
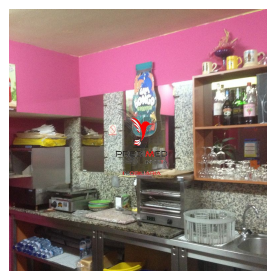
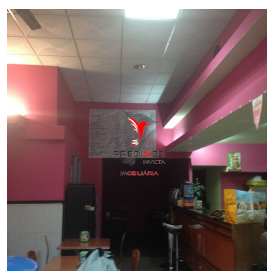
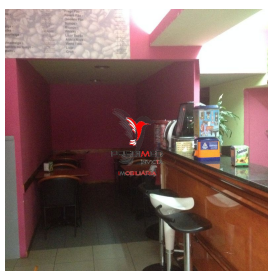
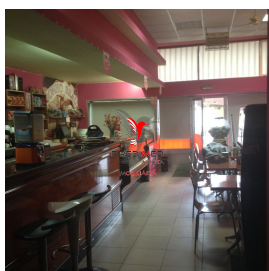
Predimed Invicta - - Predimed Imobiliária, Med. Imob. Unip., Lda

AMI: 13558

910 554 994 / 223 171 034

invicta@predimed.pt

www.predimedinvicta.pt



## Trespasse - Café - Confeitaria - Av. Gaia

Ref.: 800200018

Café - Trespasse

25.000 €

Porto / Vila Nova de Gaia / União das freguesias de Santa Marinha e São Pedro da Afurada

Trespasa-se Café/Confeitaria, em pleno funcionamento.

Fica localizado a 3 minutos da avenida da República, zona residencial e de escritórios, serviços.

Contate-nos e saiba mais !!!